

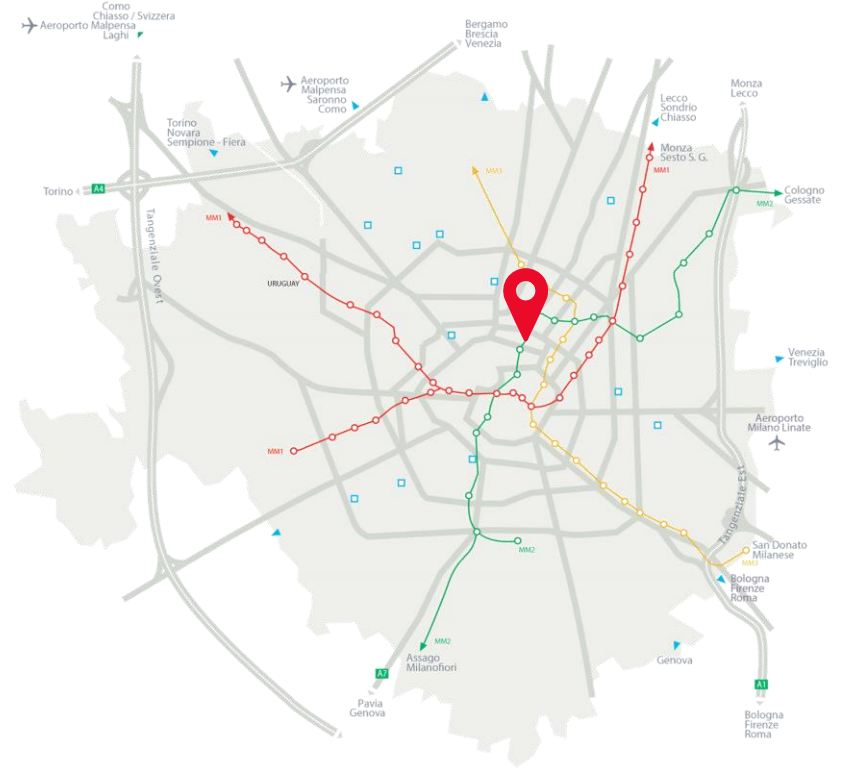
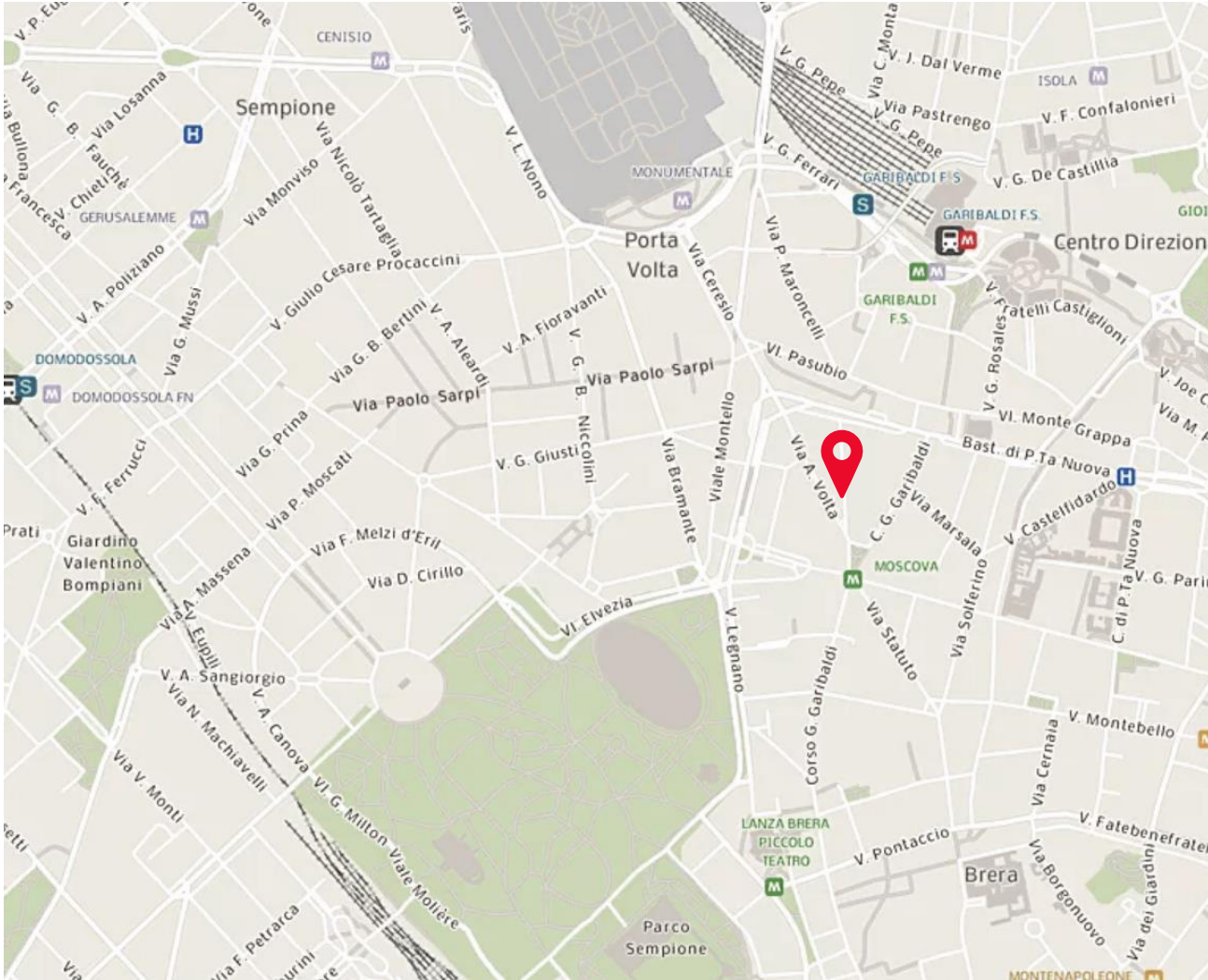
CUSHMAN &
WAKEFIELD

Via Varese 11

Milan

Via Varese 11

LOCATION MAP



M2 MOSCOVA
100 meters

M2 M5 GARIBALDI
700 meters

 GARIBALDI F.S.
700 meters

Via Varese 11

PROPERTY FOCUS



AVAILABLE AREA 1,210 sqm (offices) + 124 sqm (external areas)

ASKING RENT 650,000 €/year + VAT for the entire space
550 €/sqm/year for the single floor

DELIVERY DATE Immediate available

COMMENTS

Stand alone building:

- 3rd floor: 206 sqm (office) + 45 sqm (terrace)
- 2nd floor: 251 sqm (office)
- 1st floor: 251 sqm (office)
- Ground floor: 251 sqm (office) + 79 sqm (courtyard)
- Lower Floor: 251 sqm (office)

Possibility to lease single floor

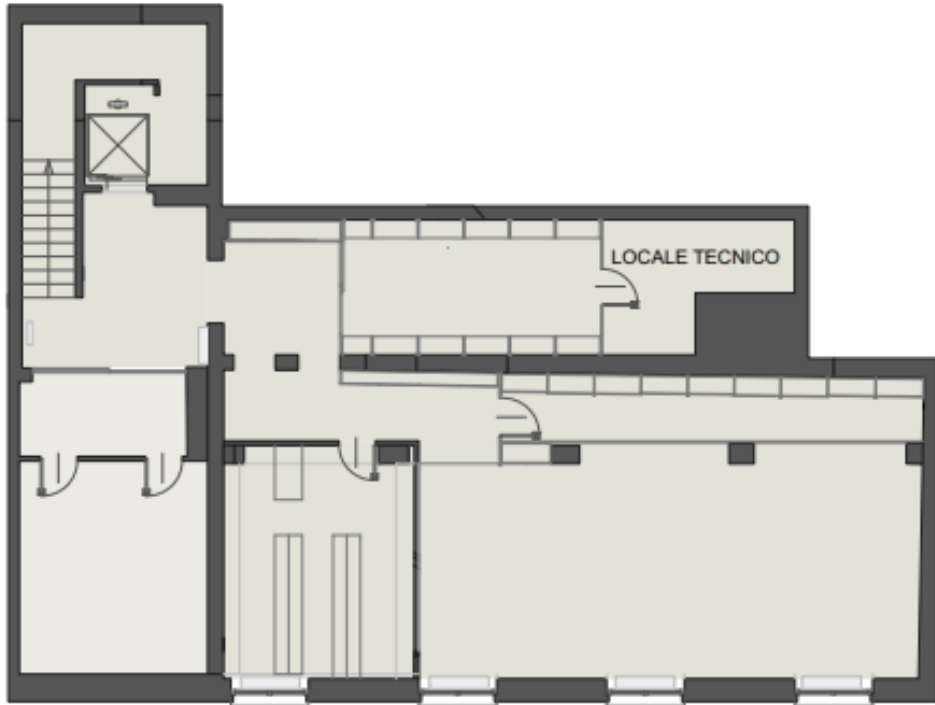
Possibility to have archives, magazine at the lower floor

Delivery conditions: Cat A

New internal lift

Via Varese 11

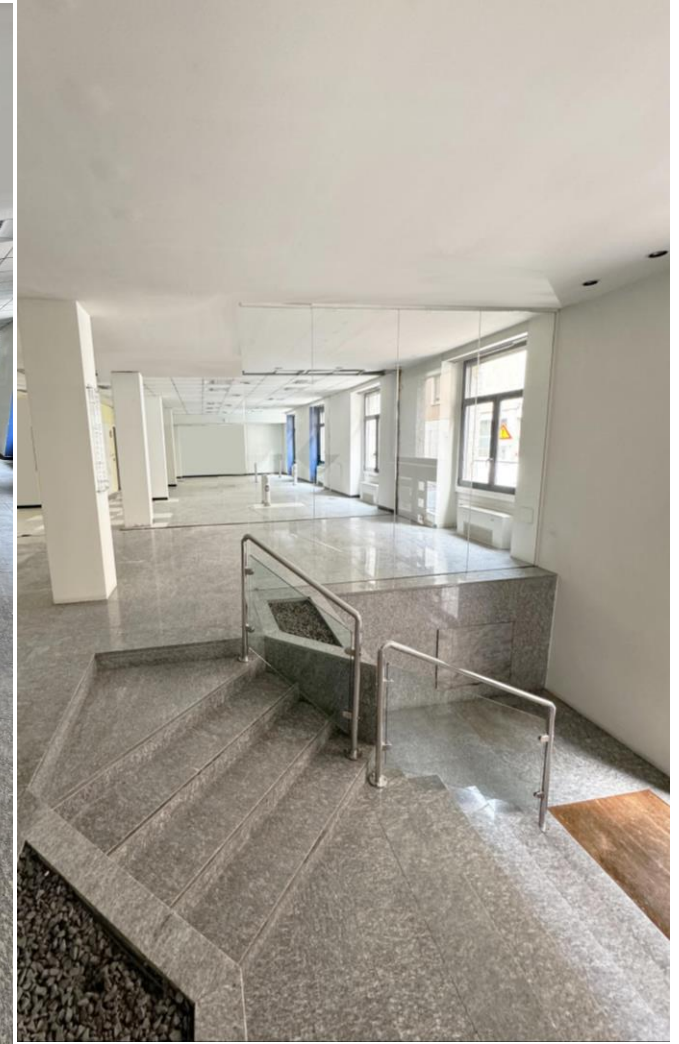
BASEMENT FLOOR - plan and photo



*Suggestion

Via Varese 11

GROUND FLOOR - plan and photo



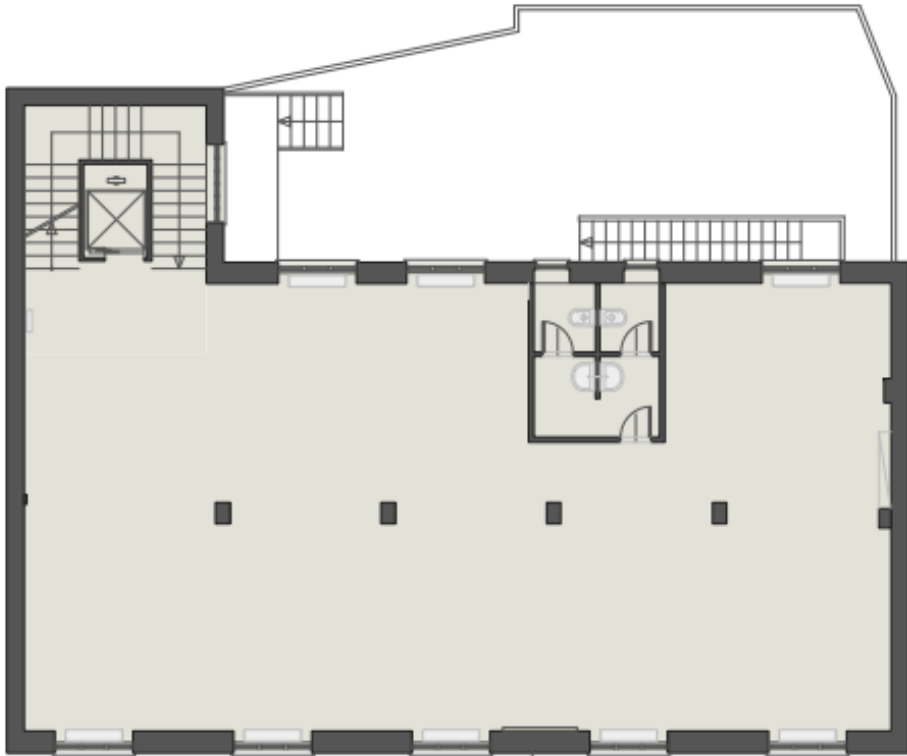
Via Varese 11

FIRST FLOOR - plan and photo



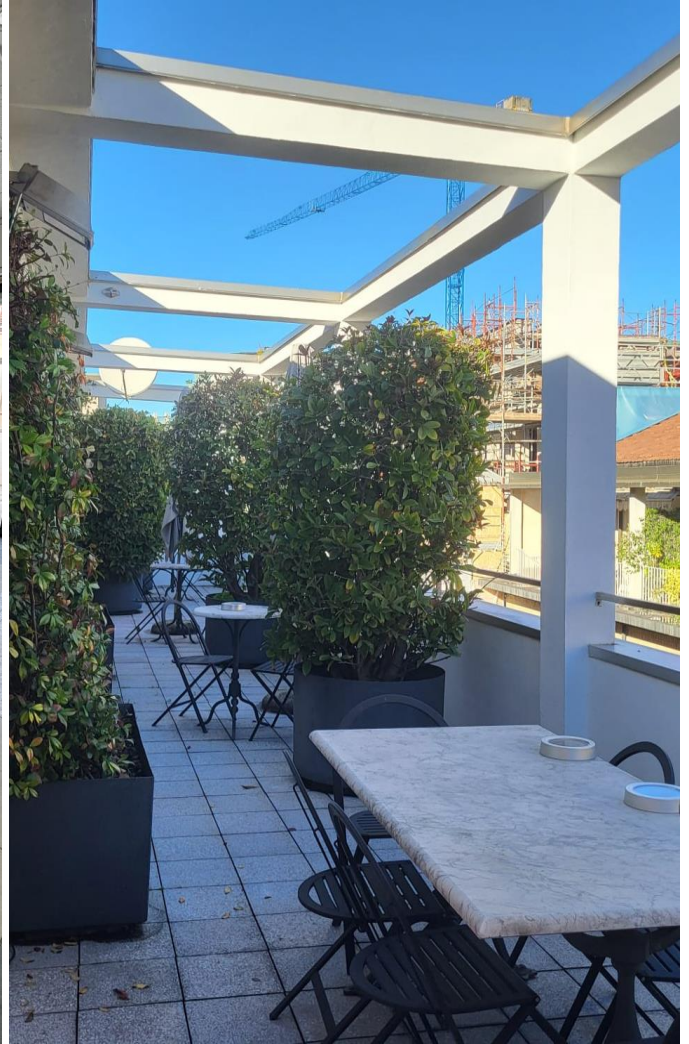
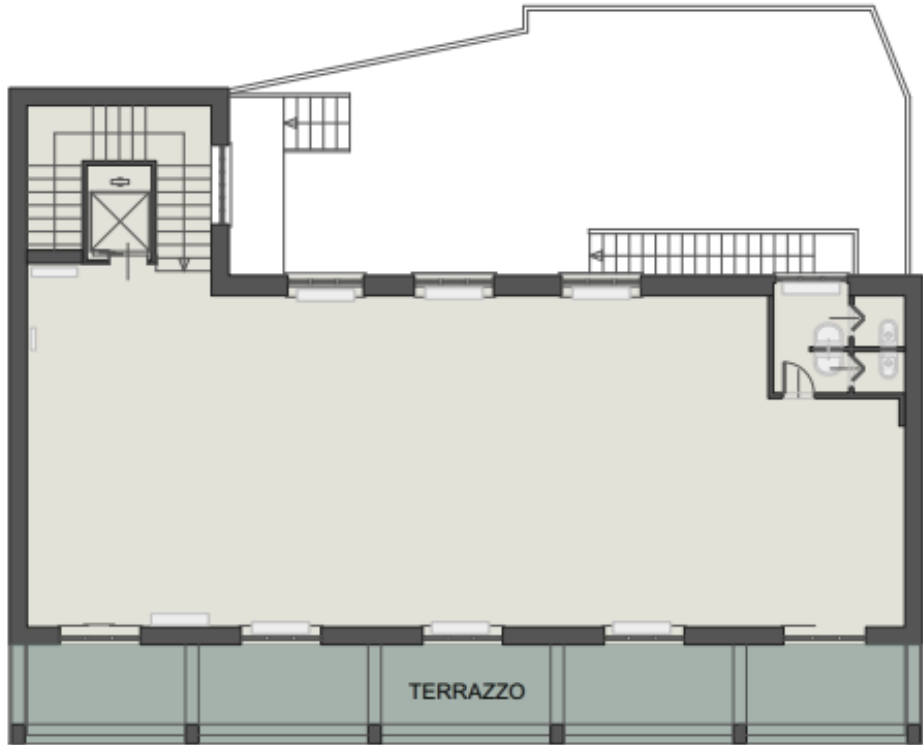
Via Varese 11

SECOND FLOOR - plan and photo



Via Varese 11

THIRD FLOOR - plan and photo



Giacomo Paderno

+39 345 861 60 85

giacomo.paderno@cushwake.com



About Cushman & Wakefield

Cushman & Wakefield (NYSE: CWK) is a leading global real estate services firm that delivers exceptional value for real estate occupiers and owners. Cushman & Wakefield is among the largest real estate services firms with approximately 50,000 employees in over 400 offices and approximately 60 countries. In 2021, the firm had revenue of \$9.4 billion across core services of property, facilities and project management, leasing, capital markets, and valuation and other services.

To learn more, visit www.cushmanwakefield.com or follow @CushWake on Twitter.

Copyright ©2024 Cushman & Wakefield. All rights reserved.